

DETECT



PROTECT

www.hitnot.com

Pedestrians

Equipment

Silent Zones

Structures

Basic Components

When a pedestrian is in the **Warning Zone**, the LED light and the sounder will give an alarm in a series of 3 beeps. At the **Danger Zone**, the pedestrian will receive a continuous alarm from the sounder and LED.

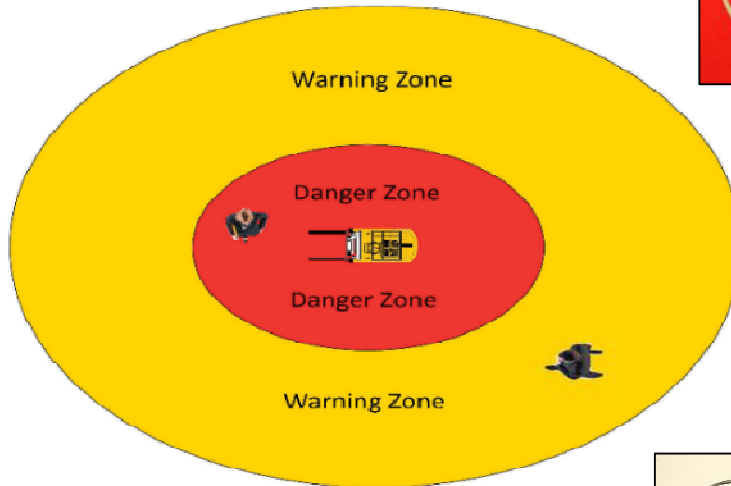
HIT-NOT's Patented technology was originally developed for the very harsh and very dangerous mining industry where it has been saving lives and preventing injuries for years. The unmatched technology has now been designed for use in all other industries using mobile equipment, like warehouses, manufacturing, ports, and many others where equipment and pedestrians work in close proximity. Unlike RFID, HIT-NOT reads and warns through walls, racks, containers and other blind corner obstructions with a audible and visual alarm to both the equipment driver and the pedestrian.

Personal Alarm Device



The Personal Alarm Device (PAD) is worn by the pedestrian and contains sensing elements that detect the magnetic field from the generator and initiates warnings for the pedestrian and vehicle operator. The PAD is calibrated to differentiate the magnetic field into two zones: **Warning Zone** and **Danger Zone**.

XL Personal Alarm Device



Factory Settings (adjustable)
Warning Zone ~ 43 ft. (x 34)
Danger Zone ~ 30 ft. (x 24)



Magnetic Field Generator System-Complete



XL Magnetic Field Generator System-Complete

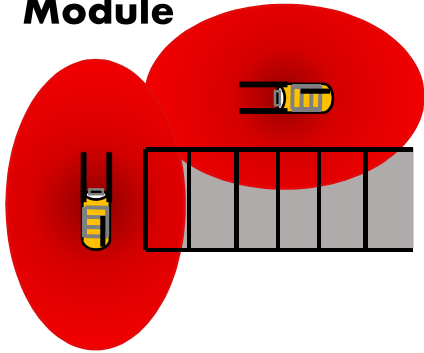


Factory Settings (adjustable)
12V
Warning Zone ~ 57 ft.
Danger Zone ~ 40 ft.
24V
Warning Zone ~ 70 ft.
Danger Zone ~ 49 ft.

The HIT-NOT® Magnetic Field Generator Systems include the Generator, the Warning Module, the Cab Silencer (silences Driver's PAD), and the Power Cable. The Generator creates a pulsing magnetic field providing a marker around the truck. The Warning Module gives the driver a visual and audible warning (adjustable 85-105 dB) of a pedestrian wearing a Personal Alarm Device (PAD) within the magnetic field of the truck.

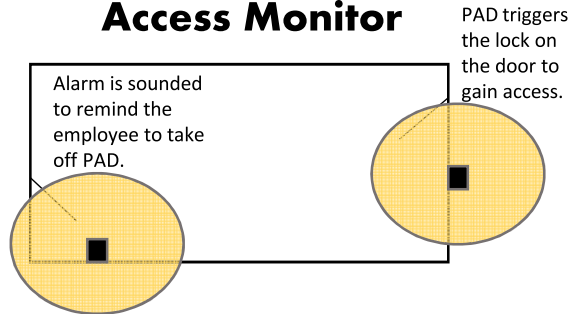
Structures

Collision Avoidance Module



The CAM located inside a Generator, functions like a PAD, and keeps trucks from colliding into one another. It also is required for the MAC-A.

Access Monitor

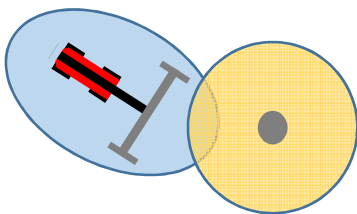


The Access Monitor will allow a facility to detect PAD access into controlled areas, prevent loss of a PAD as a detection tool and/or enable gates or doors to open.

Area Monitor

The Area Monitor can be used as a stand alone or in conjunction with the MAC-A. The Area Monitor senses the generator on the truck as it approaches, and turns on a light, sounds a horn, etc. in a designated area. The purpose is to alert workers of an approaching truck and is ideal for intersections and pedestrian areas with blind corners. (See inset in MAC diagram)

Structure Monitor



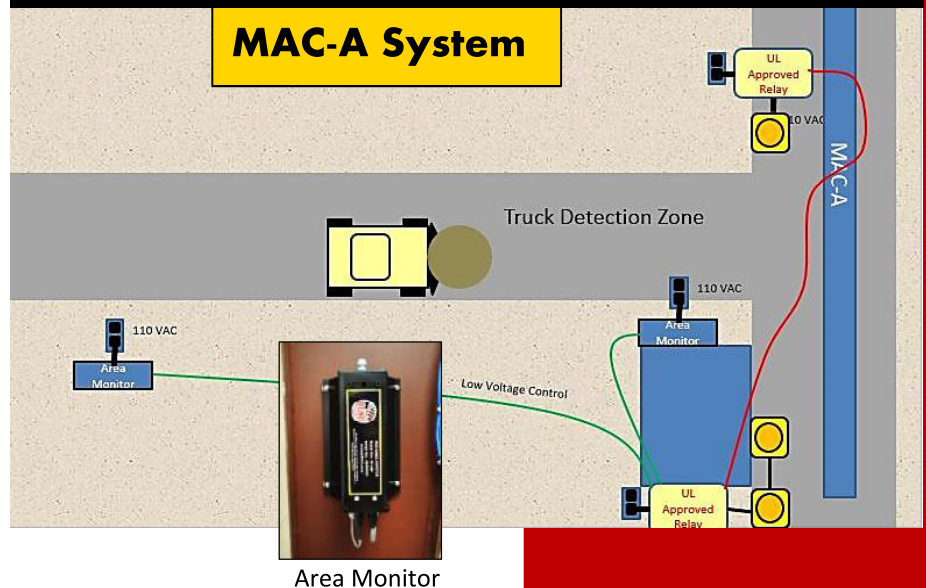
The Structure Monitor senses the generator on the truck as it approaches and sends a warning back to the truck. The purpose is to alert driver of their truck approaching a structure to protect that structure from damage. It is ideal for those permanent structures which are in constant repair and/or expensive to replace.

- Improves Safety Awareness
- May Reduce Insurance premiums
- Reduces the potential for Workman's Compensation Claims
- Works on All Types of Moving Mobile Equipment
- Vehicle to Vehicle Warning System Available
- Silent Zones and Structural Applications are Creative Solutions

The MAC-A generates an adjustable magnetic field suspended approx. 11ft above the designated area, up to 30ft wide, and can extend up to 160' in length. The MAC-A can perform up to 3 functions:

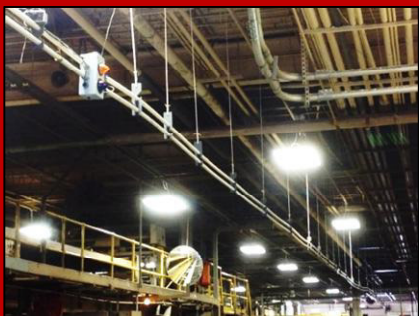
Alert for Pedestrian and Truck (w/CAM)
Alert for Pedestrian
Alert for Truck (w/CAM)

The purpose of the MAC-A is to separate pedestrians and equipment from occupying the controlled area at the same time.



Silent Zones

- Most Industrial problems can be solved with technology and forklift accidents that cause major injury and deaths are no exception. HIT-NOT's® patented technology is the solution for those types of accidents. Do not wait until an accident or death occurs to put HIT-NOT's® Protect and Detect system to work at your facility.



Room Silent Zone Jammer

Room Silent Zone

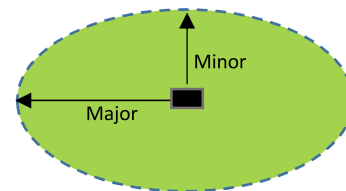
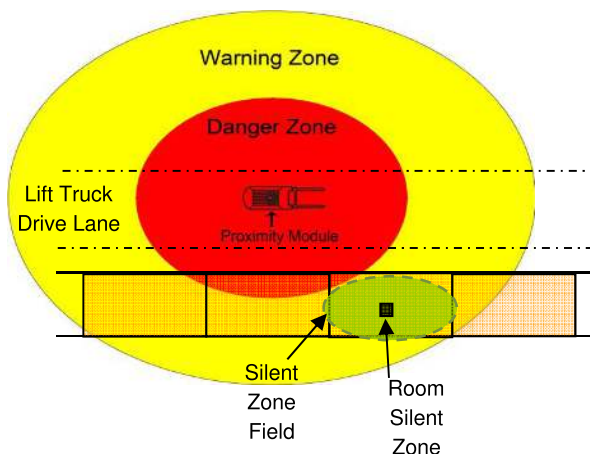
Major- 8ft to 22ft

Minor- 6ft to 18ft

Jammer

Major- 8ft to 28ft

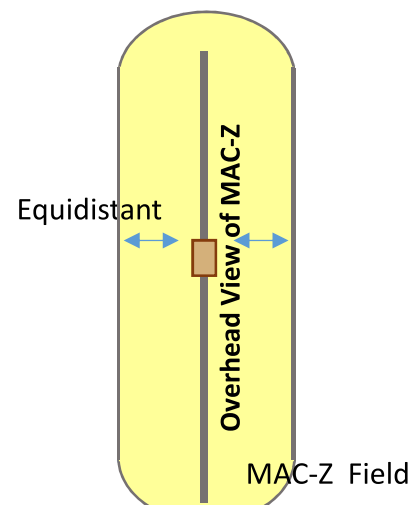
Minor- 6ft to 22ft



The Room Silent Zone or Jammer provides an area where the PADs will not alarm even with a truck equipped with a generator is nearby. Areas needing a Room Silent Zone include office(s), conference rooms, workrooms, and/or cafeteria located next to a truck path.

MAC-Z System

The MAC-Z system Personal Alarm Devices (PADs) not to sound while the *Pedestrian is in a protected area*. The purpose of the MAC-Z is to allow pedestrians and equipment to be in proximity without the alarms sounding as long as the worker/pedestrian is in a protected area.



Jimmy Helms
Sales and Marketing Director
jimmyhelms@syntechsales.com
256-571-5024

Tom Scott
Technical Director
tomscott@syntechsales.com
256-665-0558